

The future of fleet

Fleet Consulting



CGI

Challenges



Cost challenges

Understanding the cost of a vehicle over its lifetime and making the right choice first time is key to avoiding overspending.



Operational impacts

Fleet transition could bring significant changes to business operations. Minimising negative impact to operations during transition will be critical.



Understanding vehicle suitability

Not all vehicles will have a viable EV equivalent or will have routes that can be completed within battery range. With new models launching regularly, it can be difficult to select the right vehicle specification.



Meeting Net Zero targets

Understanding where carbon emissions can be cut is key for fleet-operating businesses to meet Net Zero targets.



Providing return on investment

Investments in vehicles and infrastructure need to provide long-term benefit in the form of cost savings and/or reduction in carbon emissions.



Understanding infrastructure required

Right-sizing suitable infrastructure reduces risk of overspending and decreases downtime.



Fleet transition roadmap

Our **Fleet Consulting** service conducts an in-depth assessment of your fleet operating landscape. We then provide a recommendation and roadmap to help you achieve your business goals, enabling you to make your fleet transition cost effective while minimising risks.

1 Engage

Agree the desired outcomes by understanding the fleet operations, the specific challenges, financial goals and decarbonisation targets.



2 Gather data

Assess journey cycles and historical fleet driving patterns for each vehicle and location, using telematics or routing data where available.



3 Simulate

Analyse how journeys and vehicle performance are impacted after electrification, accounting for payload and driving conditions.

4 Optimise

Evaluate battery size, charging power and charging infrastructure needed to achieve a cost effective and optimum power configuration.

5 Recommend

Deliver comprehensive report presented with alternative vehicle options, infrastructure requirements, cost analysis, CO₂ analysis and operational impacts*.

KEY OUTCOMES*

Operational viability, infrastructure assessment, cost analysis, expected CO₂ reductions and transition roadmap.

3-6 WEEKS

Assessment durations vary depending on level of service requested as well as fleet complexity and availability of data.

**Depending on level of service requested*

Benefits

- » Being able to make effective electrification choices based on analysis of your specific business needs and options.
- » Having the confidence that your new electrified fleet can support your operations, complete their journeys reliably and be ready for their next duty cycle.
- » Understand your journey to decarbonisation by having a clear view of current and projected CO2 emissions.
- » Empowering better business decisions through a clear assessment of your year-on-year transition costs, including vehicle ownership, fuel, and infrastructure.
- » Having the confidence to make changes to your fleet based on actionable insights provided in your individual, tailored report.



CGI in fleet and mobility

30

Delivering complex industry solutions and services to energy organisations globally for **over 30 years** including supermajors in Europe and North America

250

More than 250 million fuel card transactions per year processed through our end-to-end mobility management and fuel payments platform

650

650 members worldwide working to support our fleet customers

50

Over 50 product and technology partnerships to ensure the right solutions

What we bring



Deep business relationships and knowledge



Innovative technology solutions to solve the most complex business challenges



Delivery capability proven at scale



Technology and product agnostic ensuring our clients get the right solutions



CGI joins Shell's Accelerate to Zero (A2Z) programme to help their customers create a lower-carbon, more efficient fleet.

With CGI's consultancy expertise and Shell's technologies and energy solutions, organisations are offered guidance at every stage—from identifying impactful solutions to ongoing support. Together, CGI and Shell Fleet Solutions are helping fleets navigate the transition to net zero, ensuring they can make informed decisions that balance sustainability with operational efficiency.

About CGI

Insights you can act on

Founded in 1976, CGI is among the largest IT and business consulting services firms in the world.

We are insights-driven and outcomes-based to help accelerate returns on your investments. Across 21 industry sectors in 400 locations worldwide, our 90,000 professionals provide comprehensive, scalable and sustainable IT and business consulting services that are informed globally and delivered locally.

Get in touch

fleetconsulting.uk@cgi.com
cgi.com/uk/oil-and-gas/fleet-services



Fleet transition roadmap



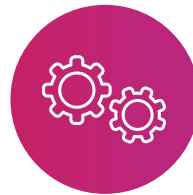
1 Engage

Agree the desired outcomes by understanding the fleet operations, the specific challenges, financial goals and decarbonisation targets.



3 Simulate

Analyse how journeys and vehicle performance are impacted after electrification, accounting for payload and driving conditions.



5 Recommend

Deliver comprehensive report presented with alternative vehicle options, infrastructure requirements, cost analysis, CO₂ analysis and operational impacts*.



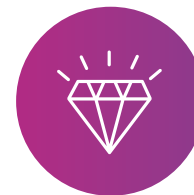
2 Gather data

Assess journey cycles and historical fleet driving patterns for each vehicle and location, using telematics or routing data where available.



4 Optimise

Evaluate battery size, charging power and charging infrastructure needed to achieve a cost effective and optimum power configuration.



service

