

Guide to SAP S/4HANA



About SAP S/4HANA

The widely used SAP ECC is being phased out in favor of an all new and improved enterprise resource planning (ERP) solution: SAP S/4HANA. SAP S/4HANA offers increased performance, an improved user experience and real-time analytics. Simplified structures and memory-resident HANA technology enable real-time data access and streamlining of processes. SAP S/4HANA can be used in your own data center or the cloud.

In the following sections, we'll outline our roadmap for SAP S/4HANA implementation, including an assessment to help identify business advantages and project risks.



CGI S/4HANA Assessment

The CGI S/4HANA Assessment is an analytics tool that provides a detailed report on the current status of an organization's ERP system and identifies the best way for transitioning to a new system.

Benefits

- Identifies the business advantages of the system update on a customer-by-customer basis
- Provides insight into the scope of the project and its impact on the client organization
- Identifies possible project risks, schedules and impact on the entire system environment
- Produces material to serve as a basis for possible competitive tendering
- Helps to justify the investment to the organization and stakeholders
- Allows for better preparation for the project and ensures a smooth implementation phase for the system project

Assessment

The assessment is divided into the technical level and the application level:

- At the technical level, both the standard SAP tools and CGI's proprietary methods are used to scan the current system environment and analyze the amount of customization, complexity and potential needs for the system environment's level increases and pre-requirements.
- At the application level, a review is conducted with the client's business or IT to determine the issues to be raised and the benefits S/4HANA provides. In addition, the problem areas, challenges and potential development targets of the current solution are addressed.

Results

After completing the CGI S/4HANA Assessment, you will receive the following information, which will help you easily start planning and preparing for the system project:

- A clear description of the recommended change model
- Technical analysis
- Readiness to switch to the new system
- The overall solution to be implemented with its further development opportunities and benefits
- Potential risks with the implementation
- Suggested timeline for the project
- Optional: A roadmap on when and to which solutions and versions the entire system environment is moving over the desired timeframe

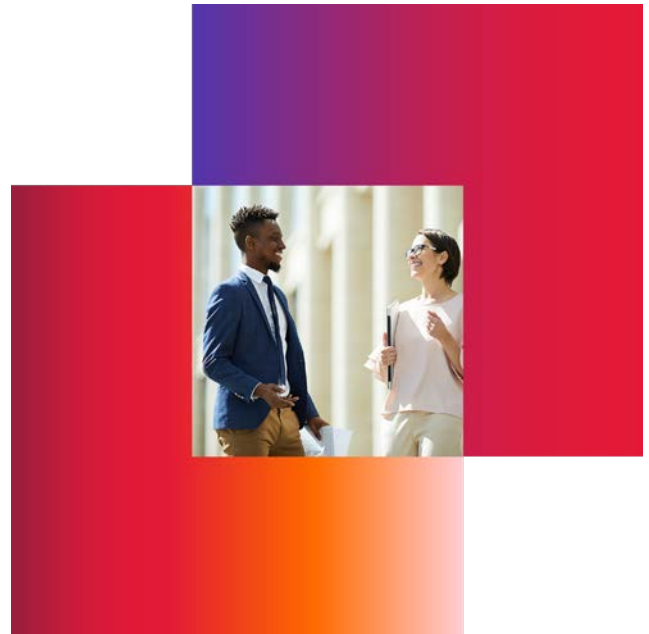
Deployment and implementation options

Migrations (Brownfield)

Migration (Brownfield) converts the current SAP system into the new S/4HANA system via special SAP conversion tools. The current configurations, customizations, client extensions, data and structures are converted from the old SAP system into the new SAP S/4HANA system.

What to do prior to the migration project

- Clean up the old system of unused client-specific customizations (so-called Z-Objects), unnecessary or unused master data, old or open receipts and all other functionality and data you do not want to import into the new S/4HANA system.
 - CGI's S/4HANA Assessment can help identify the items that should be cleaned up from the old system before the start of the migration project.
 - Cleaning up the old system prior to migration can significantly reduce downtime, i.e. time the system is unavailable for use.
- Convert all clients and suppliers into Business Partners, as clients and suppliers no longer appear in the traditional sense in the S/4HANA system and handling them via traditional client and supplier events (transactions) is no longer possible. The traditional model is replaced in the S/4HANA system by the Business Partner role, giving clients and suppliers specific Business Partner profiles.
 - The conversion requires separate configuration and mapping procedures, which typically requires a configuration phase where the account groups, number sequences, data fields and plug-ins are defined and synced to their respective Business Partners. Only then can the Business Partner itself be deployed and configured, along with CVI (Customer Vendor Integration) mapping and configuration.



Deployment of a migration (Brownfield) project

A Brownfield project involves an in-place migration of an old SAP ERP production system to S/4HANA “on the fly” and immediately deploys it for use as soon as the finishing tasks for the conversion are completed.

The cornerstone of a migration project’s production deployment is often the “downtime” where the system is unavailable for use and thus all operational activities are either stopped or carried out using traditional methods such as pen and paper. Downtime can best be minimized with good preparation and planning.

Sometimes, the operation of the business is so critical that it does not allow lengthy SAP system downtime during which the system cannot be used. In these cases, the near-zero downtime and even the zero downtime methods can be considered. With these methods, the system is unavailable for a very short time, or even not at all. However, these are special cases that typically require very careful client-specific planning, and often also tools and methods provided by SAP that may not be widely available.

A success story

CGI successfully updated the ERP system of the University of Helsinki to S/4HANA in early 2018 as a migration project. The project was preceded by the Assessment phase, the results of which served as the basis for the project and as a work plan for the modifications. They also allowed the university to efficiently tender their ERP system project.



Deployment and implementation options



New implementations (Greenfield)

With new implementations (Greenfield), an entirely new S/4HANA system is created based on the new system's standards and client demands. Only the required master and transaction data is imported from the old system. However, if e.g. old client-specific customizations are to be imported from the old system, this is also possible with certain qualifications.

When to use Greenfield:

- If the existing SAP system is very old, behind on updates, highly customized or otherwise in a status without a supported path for the migration option
- If the old system contains a large number of unused and old structures, functionalities, customizations, data or otherwise overly complex system environment
- If the cleanup and repair on the old system may require more work than starting over from scratch
- If you want the opportunity to consider processes and functionalities from a completely new point of view without being constrained by the old system or outdated functionalities

New implementation (Greenfield) options

With a new implementation/Greenfield, you can explore the new SAP S/4HANA Cloud options: SAP S/4HANA Cloud Multi Tenant Edition and SAP S/4HANA Cloud Single Tenant Edition. Both options are offered as a SaaS service, making investment and liability management more flexible. In addition, Greenfield implementation can be carried out using the traditional on-premise model, allowing the operating capacity to come from either your own or the supplier's data center, or from the Azure, AWS and Google Cloud public cloud services and SAP's own HEC environment.

Deployment of a Greenfield project

Typically, the deployment and planning of a Greenfield project are carried out in a fairly traditional manner, and the cornerstone is a well-planned and implemented cut-over from the old system to the new one.

A success story

CGI's SAP S/4HANA implementation for the food company Raisio is an example of a Greenfield project that made the input, collection and analysis of the ERP data of the group's units more consistent. The solution also allows Raisio to bring easy-to-use and mobile user interfaces to different user groups.



S/4HANA benefits

Speed is one of the main advantages of S/4HANA. The memory-resident HANA database allows all core system data to be available in real-time. When the HANA database is combined with the simplified data structures of the S/4HANA system, the HANA-optimized code line and the new, intuitive and scalable Fiori user experience, the new S/4HANA system functions at optimal efficiency.



S/4HANA benefits realized:

- The statement of accounts and work during the turn of the period are accelerated because the data is in real-time and quickly processed
- Certain planning elements are close to the core, which also enhances and accelerates operations, especially from the Plan/Actual point of view
- Mobility, the new UI and the SAP Fiori applications offer personnel in different roles real-time status data in a completely new manner, especially from operational reporting and rapid response points of view
- Operational status data can be presented in the KPI and dashboard formats in real time, which significantly speeds up the response time in problem situations while providing a real-time snapshot of the desired application area
- A dedicated dashboard for the desired indicators and figures facilitates business operations management
- Producing real-time analytics directly from the operational system enables direct focus on a single event on the dashboard and, for example, completing an unfinished delivery process

Deployment steps when switching to SAP S/4HANA

Assess the initial situation:

Carefully determine the technical status and important processes of your current system.

Familiarize yourself with the new system:

Learn the features of the new system and the business requirements, and use the information to build a business plan for your organization.

Identify the risks:

Analyze the most critical functions of your system and determine where the potential risks are hiding.

Make a plan:

Based on the information collected, create a strong vision of the goals of the upgrade and how the transition process will be carried out.

Choose a suitable partner:

A smooth transition from the SAP system to the new S/4HANA system is made easier by planning the project from the start with a knowledgeable partner that already has practical experience in successful S/4HANA projects, such as CGI.



A partner of choice

3,150+

dedicated SAP consultants in over 15 countries

25+

areas of specialization from application management, SuccessFactors, Fiori, e-commerce, HANA and Mobility to industry solutions in Financial Services, Manufacturing, Healthcare and Utilities

25+

years of experience in managing SAP ERP projects

600+

SAP clients

750,000+

SAP end users supported

18

Centers of Excellence globally and can tap into global network of specialized experts as well as have offshoring capabilities

SAP

certified hosting facilities in three distinct geographies

ISO

certified quality framework and world class delivery standards

9.22/10

average Client Satisfaction Assessment Program (CSAP) rating in FY20

SAP® Certified

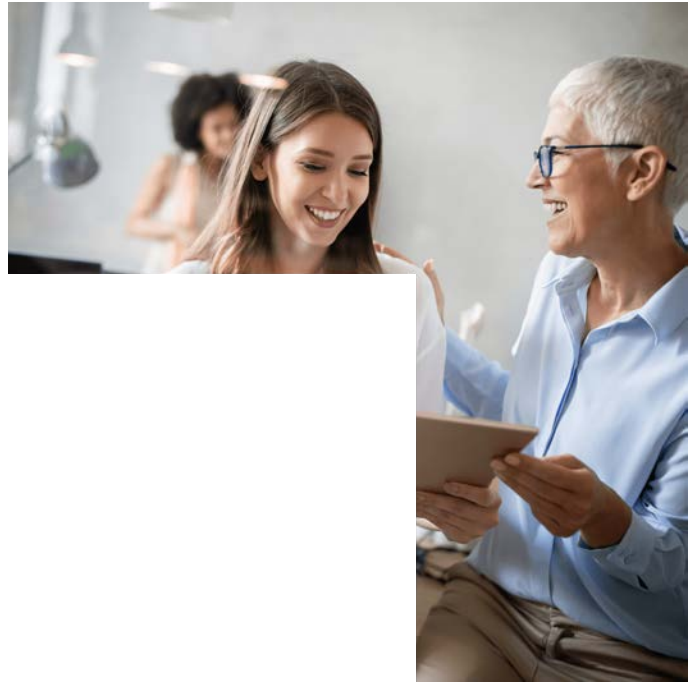
in Application Management Services

SAP® Certified

in SAP HANA® Operations Services

SAP® Certified

in Hosting Services



About CGI

Insights you can act on

Founded in 1976, CGI is among the largest IT and business consulting services firms in the world.

We are insights-driven and outcomes-based to help accelerate returns on your investments. Across hundreds of locations worldwide, we provide comprehensive, scalable and sustainable IT and business consulting services that are informed globally and delivered locally.

cgi.com/sap